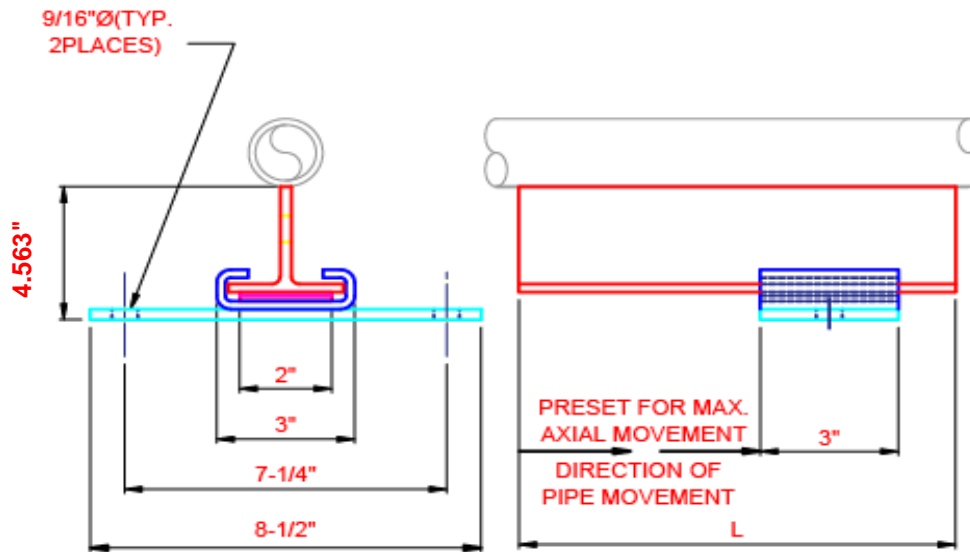


SLIDEX1 GUIDE SUPPORT BOLT DOWN BASE

2801/2N-
4383D



FOR PIPE DIAMETERS 1" THRU 4"

MODEL NO.	MOVEMENT	L	WEIGHT	MAXIMUM LOAD *
	(in)	(in)	(Lbs)	(Lbs)
SLDX1BS	4	6	4.9	12,000
SLDX1BL	10	12	9.2	12,000

* CORRECT THE MAX LOAD BASED ON THE TABLE BELOW.

TEMP DEG F	FACTOR
<70	1.00
100	0.85
200	0.55
300	0.40
400	0.25

- Notes:
- Material is carbon steel, with one coat shop paint.
 - Uses heat cured PTFE to permit unrestrained movement. Maintenance free.
 - Maximum insulation thickness: 3.5"
 - Maximum temperature: 400F.

www.flexicraft.com

CUSTOMER: _____
 PROJECT: _____
 ENGINEER: _____
 CNTRCTR: _____
 P.O. NO: _____



DESCRIPTION:
SLIDEX1 SLIDE GUIDE-BOLT DOWN BASE

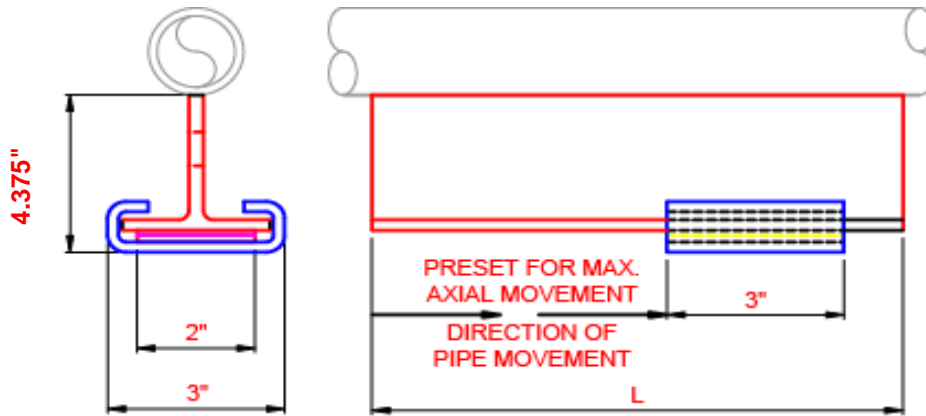
DRAWN BY:
PB

DATE:
03/17

DWG NO.:
SLIDEX1B

SLIDEX1 GUIDE SUPPORT WELD DOWN BASE

2801/2N-
4383C



FOR PIPE DIAMETERS 1" THRU 4"

MODEL NO.	MOVEMENT	L	WEIGHT	MAXIMUM LOAD *
	(in)	(in)	(Lbs)	(Lbs)
SLDX1WS	4	6	3.7	12,000
SLDX1WL	10	12	6.9	12,000

* CORRECT THE MAX LOAD BASED ON THE TABLE BELOW.

TEMP DEG F	FACTOR
<70	1.00
100	0.85
200	0.55
300	0.40
400	0.25

- Notes:
- Material is carbon steel, with one coat shop paint.
 - Uses heat cured PTFE to permit unrestrained movement. Maintenance free.
 - Maximum insulation thickness: 3.5"

www.flexicraft.com

CUSTOMER: _____
 PROJECT: _____
 ENGINEER: _____
 CNTRCTR: _____
 P.O. NO: _____

FLEXICRAFT 
 "Flexible Piping Solutions"

DESCRIPTION:
SLIDEX1 SLIDE GUIDE-WELD DOWN BASE

DRAWN BY:
PB

DATE:
03/17

DWG NO.:
SLIDEX1W