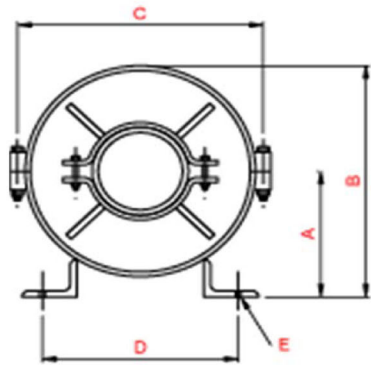
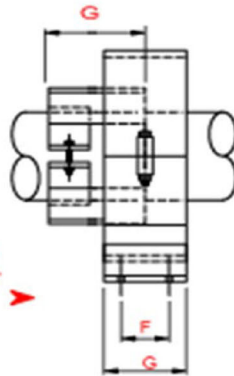


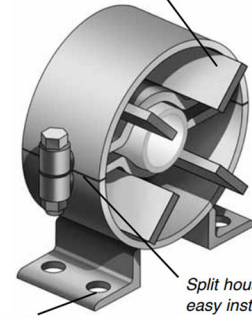
SPIDER 10 PIPE GUIDE



DIRECTION OF PIPE MOVEMENT →



"Spider" spacers center pipe in housing and are sized to allow insulation to be packed around pipe.



Feet can be bolted or welded to structure.

Split housing for easy installation.

CHOOSE MODEL BASED ON ALLOWED INSULATION THICKNESS & DIAMETER (SEE 2ND SHEET).
SPECIFY GUIDE BY BOTH MODEL NO. AND DIAMETER.

MODEL NO.	DIMENSIONS (in)							MAX MVMNT (in)	WEIGHT (lbs)
	A	B	C	D	E	F	G		
23	3-1/2	5-7/8	6-1/8	4-1/8	5/8	1-3/4	3	4	7
24	4	6-3/4	7-1/8	4-3/8	5/8	1-3/4	3	4	8
25	4-3/8	7-5/8	8-1/8	5-1/8	5/8	1-3/4	3	4	9
26	5-1/4	9-1/4	10-1/8	6-1/8	5/8	1-3/4	3	4	11
27	6-1/4	11-5/8	12-1/8	7	5/8	2-3/4	4	4	17
28	7	13-3/8	14-1/8	8-1/4	5/8	2-3/4	4	4	20
29	7-7/8	15-1/8	16-1/8	9-7/8	3/4	4	6	6	40
30	8-7/8	17	18-1/8	10-7/8	3/4	4	6	6	48
31	9-3/4	18-3/4	20-1/8	11-7/8	3/4	4	6	6	54
32	10-7/8	21	22-1/8	11-3/4	3/4	6	8	6	61
33	12-1/8	23-1/8	24-1/8	14-1/2	7/8	6	8	8	89
34	13	25	26-1/8	15-1/2	7/8	6	8	8	102
35	14-3/4	27-3/4	28-1/8	17-1/8	1-1/8	6	8	8	110
36	16-1/2	31-1/2	32-1/8	19-1/4	1-1/8	6	8	8	150

Notes: Material is carbon steel, with one coat shop paint.
Longer maximum movement Spider 10 guides are available.
Models 23 to 28 (2) bolts on housing connection; Models 29 to 36 (4) bolts.
Guides are not designed for supporting piping (see slide guides).

CUSTOMER: _____
PROJECT: _____
ENGINEER: _____
CNTRCTR: _____
P.O. NO: _____

FLEXICRAFT 
"Flexible Piping Solutions"

DESCRIPTION:

SPIDER 10 PIPE GUIDE

DRAWN BY:
PB

DATE:
02/16

DWG NO:
SPIDER10-1

SPIDER 10 PIPE GUIDE

PAGE 2

CHOOSE MODEL BASED ON THE THICKNESS OF THE INSULATION TO BE USED. SEE PAGE 1 FOR MODEL DIMENSIONS. SPECIFY GUIDE BY BOTH MODEL & DIAMETER

DIA (in)	ALLOWED INSULATION THICKNESS						
	1"	1-1/2"	2"	2-1/2"	3"	3-1/2"	4"
1/2	23	23	24	26	26	26	27
3/4	23	24	25	26	26	27	27
1	23	24	25	26	26	27	27
1-1/4	23	24	25	26	26	27	27
1-1/2	24	24	25	26	26	27	27
2	24	25	26	26	27	27	28
2-1/2	25	25	26	26	27	27	28
3	25	26	26	27	27	28	28
4	26	26	27	27	28	28	29
5	27	27	27	28	28	29	30
6	27	27	28	28	29	30	30
8	28	28	29	30	30	31	31
10	30	30	30	31	32	32	32
12	31	31	31	32	32	33	33
14	32	32	32	32	33	33	34
16	33	33	33	33	34	34	35
18	34	34	34	34	35	35	-
20	35	35	35	35	36	36	36
24	36	36	36	36	-	-	-

CUSTOMER: _____
 PROJECT: _____
 ENGINEER: _____
 CNTRCTR: _____
 P.O. NO: _____



DESCRIPTION:

SPIDER 10 PIPE GUIDE

DRAWN BY:
PB

DATE:
02/16

DWG NO.:
SPIDER10-1