

# "PTFE" Hose

## Higher Pressure Applications

Hosecraft combines excellent flexibility with a high pressure rating. The seamless open pitch, spiral PTFE convolutions facilitate cleaning because they're self-draining. MultiFlex is perfect for demanding high purity and chemical applications. Available in sizes 1/2" to 3"



**316 Stainless Steel Braid  
Pure PTFE**



**Polypropylene Braid  
Static - Dissipating PTFE**



**Polypropylene Braid  
Pure PTFE**



**316 Stainless Steel Braid  
Static - Dissipating PTFE**

## MULTIFLEX™ ADVANTAGES

### Corrosion Resistant

PTFE is fully resistant to the broadest range of industrial chemicals and has a zero corrosion rate with lower life cycle costs.

### Cleanable

Non-Stick, low porosity tube is self cleaning and does not trap bacteria and can be cleaned with steam, detergents, caustics or solvents.

### Sanitary

FDA- approved materials meet or exceed Pharmacopoeia class VI and 3A standards.

### Compatible

Will not contaminate or impart a taste, color or odor to any media.

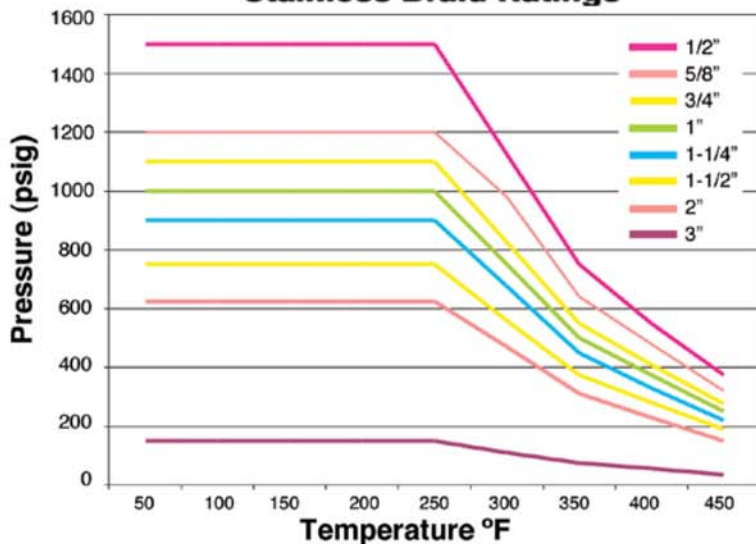
### Flexible

Ultra flexible engineered design that resists cracking and stress corroding.

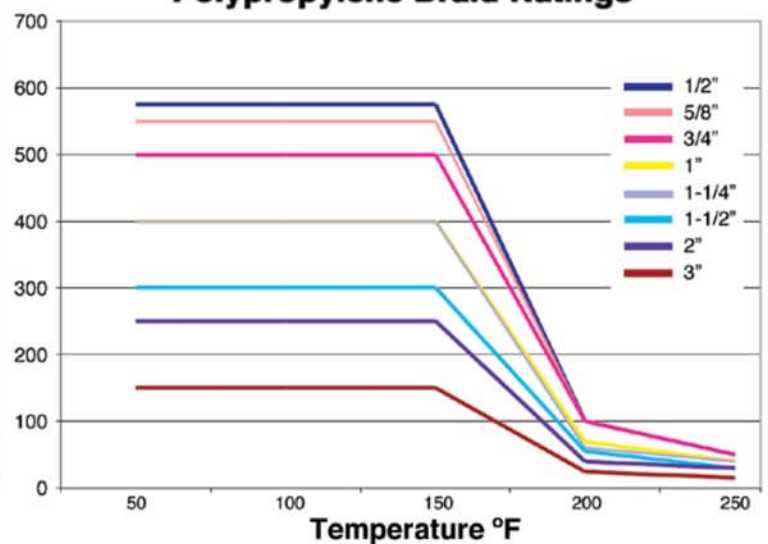
### Durable

Engineered for extended use in hostile environments involving severe chemical, thermal, and mechanical stresses. Does not suffer from aging or embrittlement like rubber even with extreme thermal cycling.

### MultiFlex™ & ProFlex™ Stainless Braid Ratings



### MultiFlex™ & ProFlex™ Polypropylene Braid Ratings



# HosecraftUSA FITTINGS

## THREADED FITTINGS



**STYLE 03** Male Pipe (NPT) Hex



**STYLE 04** Male Pipe (NPT)



**STYLE 07** Female CAM Lock 'D'



**STYLE 17** Female CAM Lock 'D' Reducer



**STYLE 31** O-Ring Female Swivel 'D'



**STYLE 40** Sanitary (Tri-Clamp)



**STYLE 45** Bevel Seat Female



**STYLE 05** Flange Retainer P Series Flange Retainer



**STYLE 06** Female Pipe (NPT)



**STYLE 30** JIC Female Swivel



**STYLE 27** Female CAM Lock 'D' (PFA Encapsulated)



**STYLE 08** Male CAM Lock 'E'



**STYLE 38** Compression Adapter



**STYLE 40U** Sanitary Flare Thru (UltraFlex hose only)



**STYLE 46** Bevel Seat Male



**STYLE 25** Flange Retainer (PFA Encapsulated)



**STYLE 33** Male Union (NPT)



**STYLE 36** Female Union (NPT)



**STYLE 28** Male CAM Lock 'E' (PFA Encapsulated)



**STYLE 20** Male Flange Adapter (PFA Encapsulated)



**STYLE 39** Compression Connector with Nut and Ferrule



**STYLE 41** Sanitary Step-Up



**STYLE 48** I-Line Male



**STYLE 29** Flare Thru Flange (UltraFlex hose only)



**STYLE 37** Female Swivel NPSH



JIC/ NPT Adapter with PTFE Seal



**STYLE 21** Female Flange Adapter (PTFE Encapsulated)



**STYLE 02** CAM Spool Adapter



**STYLE 18** Tube Buttweld



**STYLE 42** Sanitary Mini



**STYLE 49** I-Line Female



**STYLE 37** Female Swivel NPSH



**STYLE 22** CAM Spool Adapter (PFA Encapsulated)



**STYLE 22** CAM Spool Adapter (PFA Encapsulated)



**STYLE 19** Pipe Buttweld



**STYLE 19** Pipe Buttweld



**STYLE 44** Sanitary X Male Cam



**STYLE 44** Sanitary X Male Cam

## CNC Machining

HosecraftUSA has (24) CNC machining centers and manufactures the most diverse fitting and collar selection in the industry. Because of its machining expertise, PureFlex can also offer a wide range of materials including; Stainless steel, carbon steel, Monel, Hastelloy, titanium, solid PVDF, solid Polypropylene and any other plastic or alloy requested.



**STYLE 11** Splice





# OPTIONS

## Hose Cover Options

- 1 **SCUFF SLEEVE**  
Protects hose exterior from damage when dragged over rough surfaces
- 2 **FIRE SLEEVE**  
Protects hose from extreme exterior temperatures. Can be used as insulation and protects personnel from extreme interior temperatures
- 3 **POLYOLEFIN**  
Provides a smooth, cleanable covering over braided hose. Many colors available
- 4 **ARMOR GUARD**  
Protects hose from kinking by not allowing it to exceed its bend radius
- 5 **SPRING GUARD**  
Provides kink resistance and protects hose from damage when dragged over rough surfaces
- 6 **HDPE ARMOR**  
Provides kink and wear protection during rough handling. Available in (8) colors for color coding and is the only protective cover that can be installed on an existing assembly.



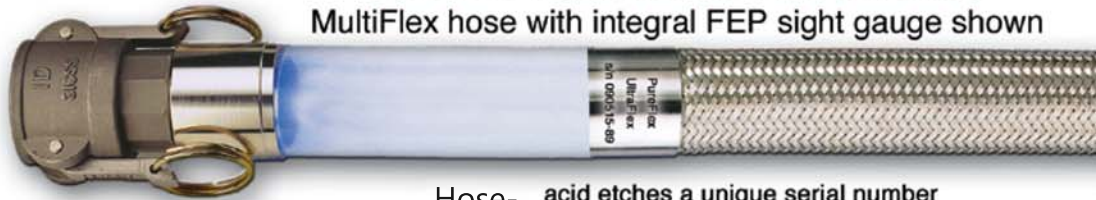
## Electrically Heated Hoses & Controls



Consult Factory for more information

## Custom Fabricated Assemblies

MultiFlex hose with integral FEP sight gauge shown



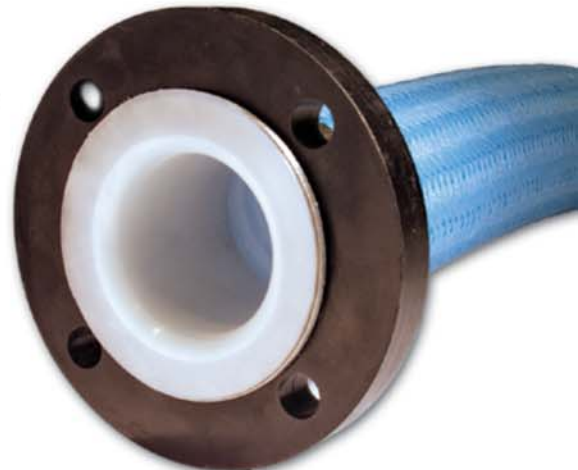
Hose- acid etches a unique serial number on every assembly 3/4" and larger. Other special tagging available



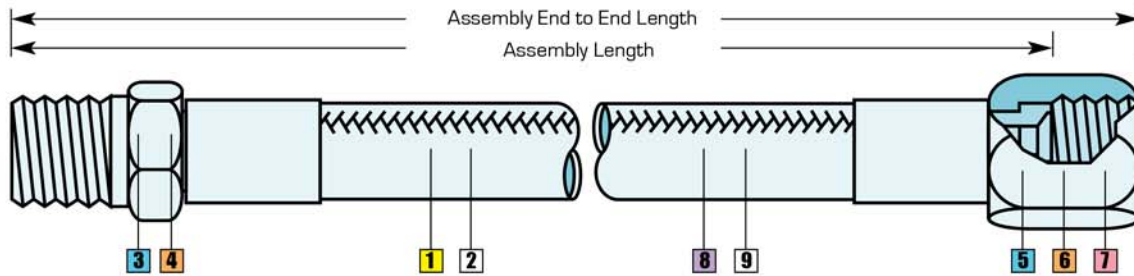
## Durcor-62™ Composite Flanges



- **Strong As Steel**
- 1/4 The Weight Of Stainless
- Class 150 Rated
- ANSI B16.5
- (-)60°F to (+)300°F
- Lower Cost Than 316s.s.
- Lower Transportation Cost
- Lower Installed Cost
- Lower Life Cycle Cost
- **Zero Corrosion Rate**
- 5 Year Warranty



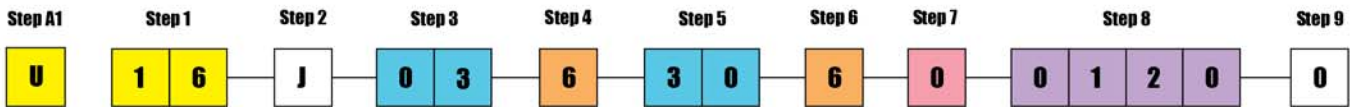
# HOW TO ORDER



## ULTRAFLEX HOSE ASSEMBLY NUMBERING SYSTEM

Steps to order a 1" UltraFlex assembly with a length of 12", 316SS male NPT one end, 316SS JIC other end. No options.

Sample part number: **U16J036306001200**



### STEP A1 Hose Series

U = UltraFlex  
M = MultiFlex  
P = ProFlex

### STEP 1 Determine I.D. of UltraFlex tube: 16 = 1"

08 = 1/2"  
12 = 3/4"  
16 = 1"  
24 = 1-1/2"  
32 = 2"  
48 = 3"  
64 = 4"

### STEP 2 Determine hose product code: J

U = Bare  
J = SS Braid  
P = PP Braid  
S = Special

### STEP 3 Determine fitting style of 1st end: 03 = Male NPT

**Threaded**  
03 = Male pipe hex NPT  
04 = Male pipe NPT  
06 = Female pipe NPT  
30 = JIC female swivel  
33 = Male union [NPT]  
36 = Female union [NPT]  
37 = Female swivel NPSH

**Flanges**  
05 = Flange retainer  
15 = Flange retainer P-series  
25 = Enc. flange retainer  
29 = Flare thru flange

**Camlock**  
07 = Female cam lock "D"  
27 = Enc. female cam lock "D"  
08 = Male cam lock "E"  
28 = Enc. male cam lock "E"

**Compression**  
31 = O-ring female swivel "D"  
38 = Compression adapter  
39 = Compression connector  
w/nut & ferrule

**Buttweld**  
18 = Tube buttweld  
19 = Pipe buttweld

**Sanitary**  
40 = Sanitary tri-clamp  
40U = Sanitary flare thru  
41 = Sanitary step-up  
42 = Sanitary mini  
48 = H-line male  
49 = H-line female  
45 = Bevel seat female  
46 = Bevel seat male

### STEP 4 Determine fitting material: 6 = 316SS

4 = 304SS  
6 = 316SS  
C = Carbon steel  
T = TFE encapsulated  
H = Hastelloy  
M = Monel  
A = Alloy 20  
K = Kynar  
P = Polypropylene

### STEP 5 Determine fitting style of 2nd end: 30 = JIC

**Threaded**  
03 = Male pipe hex NPT  
04 = Male pipe NPT  
06 = Female pipe NPT  
30 = JIC female swivel  
33 = Male union [NPT]  
36 = Female union [NPT]  
37 = Female swivel NPSH

**Flanges**  
05 = Flange retainer  
15 = Flange retainer P-series  
25 = Enc. flange retainer  
29 = Flare thru flange

**Camlock**  
07 = Female cam lock "D"  
27 = Enc. female cam lock "D"  
08 = Male cam lock "E"  
28 = Enc. male cam lock "E"

**Compression**  
31 = O-ring female swivel "D"  
38 = Compression adapter  
39 = Compression connector  
w/nut & ferrule

**Buttweld**  
18 = Tube buttweld  
19 = Pipe buttweld

**Sanitary**  
40 = Sanitary tri-clamp  
40U = Sanitary flare thru  
41 = Sanitary step-up  
42 = Sanitary mini  
48 = H-line male  
49 = H-line female  
45 = Bevel seat female  
46 = Bevel seat male

### STEP 6 Determine fitting material: 6 = 316SS

4 = 304SS  
6 = 316SS  
C = Carbon steel  
T = TFE encapsulated  
H = Hastelloy  
M = Monel  
A = Alloy 20  
K = Kynar  
P = Polypropylene

### STEP 7 Determine flange material: 0 = None

0 = None  
D = Ductile iron  
C = Carbon steel  
4 = 304SS  
6 = 316SS  
K = Kynar  
P = Polypropylene

### STEP 8 Determine overall length of UltraFlex hose in inches: 0120 = 12"

Last digit in 1/8th increments.

### STEP 9 Determine options: 0 = None

0 = None  
B = Conductive hose liner  
Z = 300# Flg  
L = Locking female cam  
S = Spring guard  
A = Armor guard  
F = Firesleeve  
P = Polyolefin cover  
T = TFE shrink cover  
H = Hypalon cover  
N = Nylon scuff guard  
D = HDPE Armor

2315 W. Hubbard Street  
Chicago, IL 60612  
Phone: (800) 584 4168  
Web: www.HosecraftUSA.com

