

**100% COMPLIANT WITH
THE CHLORINE INSTITUTE'S PAMPHLET 6**

DEMAND HOSECRAFTUSA QUALITY



**CL2™
CHLORINE-BROMINE
TRANSFER HOSES**





CL2

100% COMPLIANT WITH CHLORINE INSTITUTE SPECIFICATIONS

CL2™ Advantages

- Zero corrosion rate
- Does not stress fatigue or stress corrode like metal hose
- 5:1 safety factor for minimum burst
- Monel® fittings for dry service
- Hastelloy® C276 fittings for wet service
- Light weight
- Meets all Chlorine Institute standards for non-metallic hose

CL2™ Hose Service

- Chlorine
- Bromine
- Sodium hypochlorite
- Other highly aggressive oxidizers or corrosives

HosecraftUSA CL2 hose assemblies are specifically designed for the safe transfer of chlorine in manufacturing, transporting and packaging industries. It is ideal for loading/unloading barges, rail cars, tankers and filling 1-ton, 100 lb and 150 lb cylinders. CL2 hose has excellent chemical resistance and is not subject to stress fatigue or corroding like metal hose. It is light weight, easy to clean and resists corrosion from any exposure to moisture/humidity which can unintentionally enter systems. CL2 hose assemblies are 100% compliant with the Chlorine Institute's Pamphlet 6.

SPECIFICATIONS

Max Temperature Rating: Kynar Braid +255°F

HOSE I.D. NOMINAL (in)	HOSE O.D. NOMINAL (in)	MAX. OPERATING PRESSURE* (psi)	MIN. BURST PRESSURE* (psi)	PROOF PRESSURE TEST* (psi)	NOMINAL WEIGHT** (lbs/ft)	MIN. BEND RADIUS (in)
1/2	.75	500	2500	1000	.19	2.00
1	1.50	375	1875	750	.40	3.50
1 1/2	2.10	375	1875	750	.59	6.00
2	2.62	375	1875	750	.87	9.50

*Pressure ratings are based at +70°F (21°C)
**Weight can vary depending on chafe guard selection.



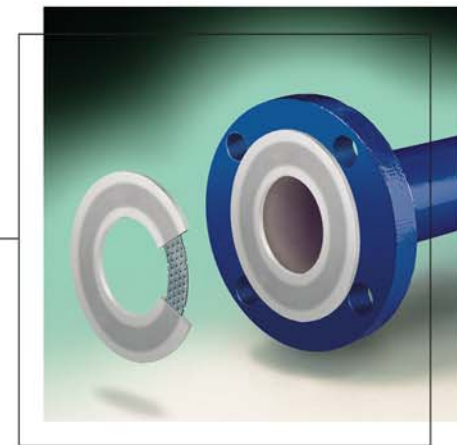
HosecraftUSA options on CL2 hose chafe guards include (left to right):

- PVDF Kynar® heavy braid
- HDPE abrasion guard
- CPE pin pricked rubber



HosecraftUSA offers the widest selection of hose end fittings and materials:

- Schedule 80 NPT's
- Schedule 80 flange retainers
- PFA encapsulated Schedule 80 flange retainers
- Monel material for dry chlorine (standard)
- Hastelloy C276® material for wet chlorine (option)



HosecraftUSA TASK-LINE® Gaskets are manufactured with virgin PTFE resin molded around and through a stainless steel perforated metal insert. TASK-LINE Gaskets are recommended for chlorine service due to many advantages:

- Zero corrosion rate
- Blow-out protection
- Seats and releases easily
- -100°F to +400°F



Thick "virgin PTFE" (as specified by the Chlorine Institute) consists of a one-piece, solid extruded tube with no seams or voids, helically convoluted to facilitate draining and cleaning and reduce transfer time cycles.

CL2 hose consists of two layers of high pressure rated PVDF (Kynar®) braid that is resistant to wet or dry chlorine service (1/2" is single braided). PVDF braid is specified by the Chlorine Institute.

HosecraftUSA collar materials:

- Monel, primary braid collar
- Stainless, secondary chafe guard collar as specified by the Chlorine Institute

1" wide hex flats as specified by the Chlorine Institute.



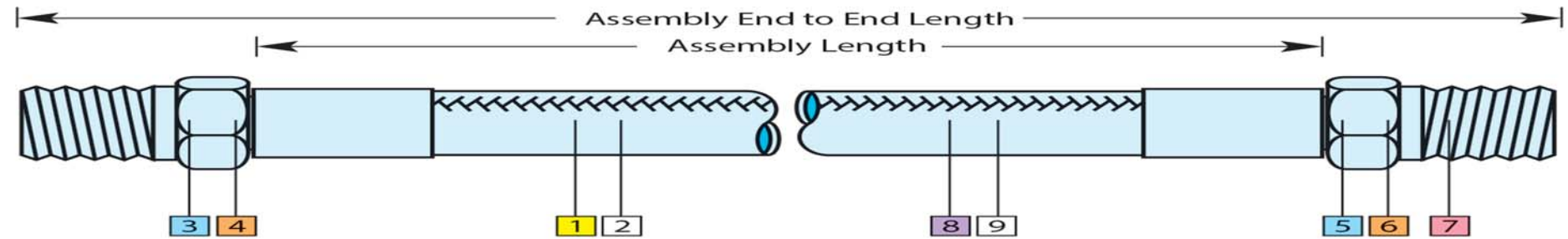
Every HosecraftUSA CL2 hose contains the following information as specified by the Chlorine Institute:

- Serial number
- HosecraftUSA
- Manufacturing date
- Maximum Working Pressure
- Minimum bend radius
- Chlorine Per C.I. Pamphlet 6

100% Compliant, "All Monel" hose construction also available. Contact HosecraftUSA for more details

CL2

HOW TO ORDER



HOSECRAFTUSA HOSE ASSEMBLY NUMBERING SYSTEM

Steps to order a 1" CL2 assembly with a length of 12", Monel NPT both ends, Kynar braid with Kynar chafe guard.

Sample part number: **CL2-16-K-03-M-03-M-0-0120-K**



STEP 1

Determine size:
16 = 1"

08 = 1/2"
16 = 1"
24 = 1-1/2"
32 = 2"

STEP 2

Determine hose braid:
K = Kynar

K = Kynar

STEP 3

Determine fitting style
of 1st end:
03 = Male NPT

Threaded
03 = Male pipe hex NPT
Flanges
05 = Flange retainer
25 = Enc. flange retainer

STEP 4

Determine fitting
material: **M = Monel**

H = Hastelloy
M = Monel

STEP 5

Determine fittings style
of 2nd end:
03 = Male NPT

Threaded
03 = Male Pipe Hex NPT
Flanges
05 = Flange retainer
25 = Enc. flange retainer

STEP 6

Determine fitting
material: **M = Monel**

H = Hastelloy
M = Monel

STEP 7

Determine flange
material: **0 = None**

0 = None
M = Monel
H = Hastelloy

STEP 8

Determine overall
length of CL2 hose in
inches:
0120 = 12"

Last digit in 1/8th increments.

STEP 9

Determine chafe guard
options:
K = Kynar

E = HDPE abrasion guard
(high-density polyethylene)
K = Kynar braid
R = CPE pin pricked