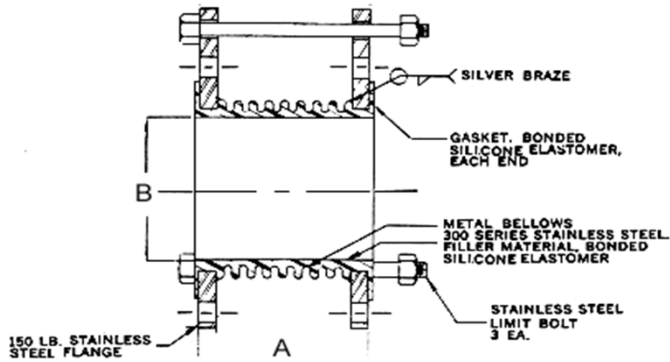


## SANITARY MODEL NLC EXPANSION JOINT




The Model Sanitary NLC metal bellows expansion joints utilize an integral silicone liner for food and similar service requiring a smooth bore. This Clean in Place (CIP) design (up to 8" diameters) greatly helps to simplify piping system design in systems that require service without convolutions that can trap solid media.

### OPERATING CONDITIONS

Pressure . . . . . 150 psi  
 Temperature . . . . . 300F

Dimensions		Movements			Physicals	Weight	Product No.
Size B	Length A	Ax Comp	Ax Ext	Lateral	Thrust Area		
in	in	in	in	in	in <sup>2</sup>		
2	4	0.25	0.25	0.125	5	13	SANXJT0200
2.5	4	0.25	0.25	0.125	9	16	SANXJT0250
3	6	0.375	0.375	0.125	11	18	SANXJT0300
4	6	0.375	0.375	0.125	19	28	SANXJT0400
5	6	0.375	0.375	0.125	29	34	SANXJT0500
6	6	0.375	0.375	0.125	39	47	SANXJT0600
8	8	0.375	0.375	0.125	64	71	SANXJT0800
10	8	0.5	0.5	0.125	99	111	SANXJT1000
12	8	0.5	0.5	0.125	139	150	SANXJT1200

 <b>"Flexible Piping Solutions"</b>  PRINT CERTIFICATION:  Certified Correct As Of: _____  By: _____	Proposal/Inquiry/Order No.: _____ <hr/> Customer Name: _____ <hr/> Project Name: _____ <hr/> Contractor: _____ <hr/> Model NLC expansion joints combine excellent performance and economy. They can usually be provided quickly.	NOTES:
--	--	--------